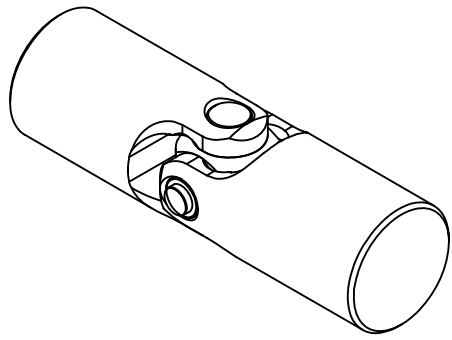
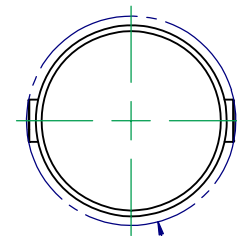
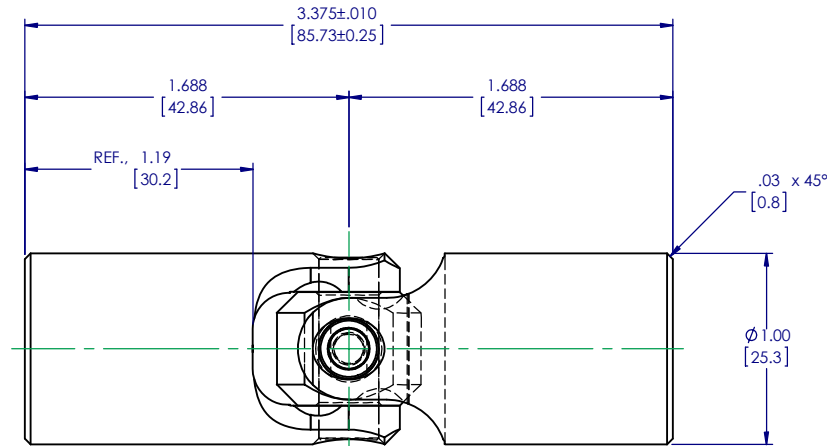
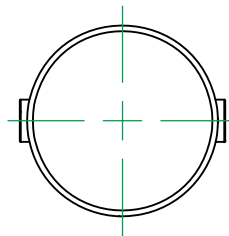
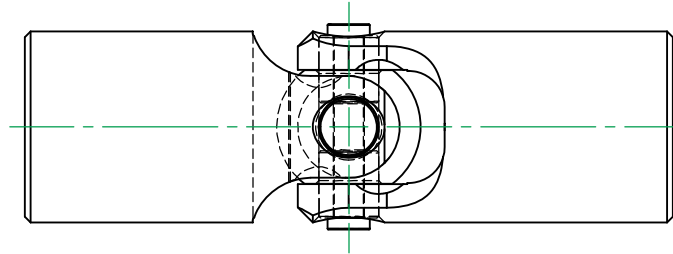


REVISIONS				
ZONE	REV.	DESCRIPTION	DATE	APPROVED

INFORMATION IN THIS DRAWING  
PROVIDED FOR REFERENCE ONLY



SCALE 1.5 : 1



$\phi 1.09$  SWING DIA. [27.7]

NOTE(s), UNLESS OTHERWISE SPECIFIED.

(1) MARK ASSEMBLY w/ "BELDEN" LOGO, PART NUMBER, REVISION LEVEL (IF ANY), DATE OF MANUFACTURE, & BELDEN JOB No.

DO NOT SCALE DRAWING

UNLESS OTHERWISE SPECIFIED CHAMFER ALL HOLES BREAK ALL SHARP CORNERS DE-BURR ALL FEATURES TURNED SURFACES: $\sqrt{63}$ MILLED SURFACES: $\sqrt{125}$ PROPRIETARY AND CONFIDENTIAL THE INFORMATION CONTAINED IN THIS DRAWING IS THE SOLE PROPERTY OF BELDEN INCORPORATED. ANY REPRODUCTION IN PART OR AS A WHOLE WITHOUT THE WRITTEN PERMISSION OF BELDEN INCORPORATED IS PROHIBITED.	STANDARD TOLERANCES, UNLESS OTHERWISE SPECIFIED DIMENSIONS ARE IN INCHES [mm]	MATERIAL ALLOY STEEL	NAME RNK	DATE 05FEB03	Belden Incorporated www.beldenuniversal.com TITLE: ASSEMBLY, UNIVERSAL JOINT, HIGH STRENGTH
	ANGULAR MACHINED: $\pm 1.0^\circ$ FRACTIONAL: TWO PLACE DECIMAL: $\pm .010$ THREE PLACE DECIMAL: $\pm .005$ FOUR PLACE DECIMAL: $\pm .0005$ CONCENTRICITY: $.0025$ T.I.R.	HEAT TREAT SEE DETAILS	CHECKED RNK	DATE 05FEB03	
	ALL HOLES TO BE LOCATED ON CENTERLINE (C) WITHIN .005" T.I.R. INTERPRET GEOMETRIC TOLERANCES I.A.W. ANSI Y14.5M-1992	FINISH NONE	ENG APPR. RNK	DATE 05FEB03	
	COMMENTS:	G.A.	MFG APPR.	DATE	
SIZE <b>C</b>	DWG. NO. UJ-HS1000	REV <b>B</b>	SCALE: 2:1	WT (Lbs): 0.655	SHEET 1 OF 2