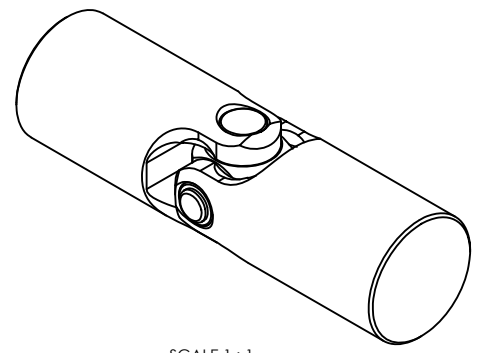
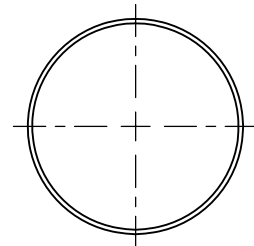
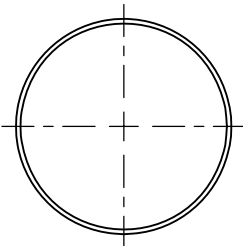
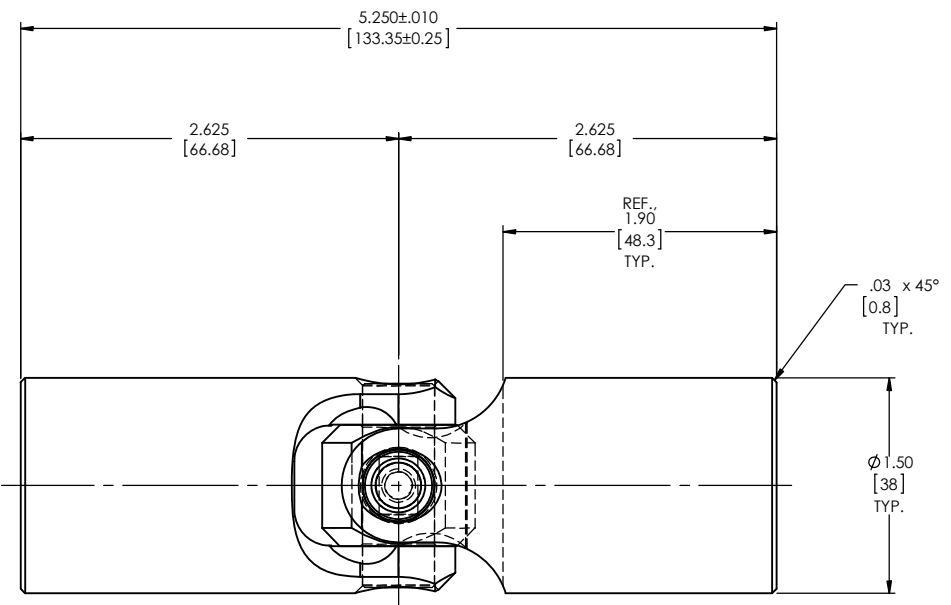


REVISIONS				
ZONE	REV.	DESCRIPTION	DATE	APPROVED

INFORMATION IN THIS DRAWING  
PROVIDED FOR REFERENCE ONLY



SCALE 1:1



DO NOT SCALE DRAWING

NOTE(s), UNLESS OTHERWISE SPECIFIED.

(1) MARK ASSEMBLY w/ "BELDEN" LOGO, PART NUMBER, REVISION LEVEL (IF ANY), DATE OF MANUFACTURE, & BELDEN JOB No.

UNLESS OTHERWISE SPECIFIED CHAMFER ALL HOLES BREAK ALL SHARP CORNERS DE-BURR ALL FEATURES TURNED SURFACES: $\sqrt{63}$ MILLED SURFACES: $\sqrt{125}$ PROPRIETARY AND CONFIDENTIAL THE INFORMATION CONTAINED IN THIS DRAWING IS THE SOLE PROPERTY OF BELDEN INCORPORATED. ANY REPRODUCTION IN PART OR AS A WHOLE WITHOUT THE WRITTEN PERMISSION OF BELDEN INCORPORATED IS PROHIBITED.	STANDARD TOLERANCES, UNLESS OTHERWISE SPECIFIED DIMENSIONS ARE IN INCHES [mm]	MATERIAL ALLOY STEEL	NAME RNK	DATE 05FEB96	Belden Incorporated <a href="http://www.beldenuniversal.com">www.beldenuniversal.com</a> TITLE: ASSEMBLY, UNIVERSAL JOINT,
	ANGULAR MACHINED: $\pm 1.0^\circ$ FRACTIONAL: $\pm .015'$ TWO PLACE DECIMAL: $\pm .010'$ THREE PLACE DECIMAL: $\pm .005'$ FOUR PLACE DECIMAL: $\pm .0005'$ CONCENTRICITY: $\pm .0025'$ T.I.R.	HEAT TREAT SEE DETAIL DRAWINGS	CHECKED RNK	DATE 05FEB96	
	ALL HOLES TO BE LOCATED ON CENTERLINE (Q) WITHIN .005" T.I.R. INTERPRET GEOMETRIC TOLERANCES I.A.W. ANSI Y14.5M-1992	FINISH NONE	ENG. APPR. RNK	DATE 05FEB96	
	COMMENTS:	G.A.	DATE	DATE	
SIZE <b>C</b>	DWG. NO. UJ-HS1500	REV D	SCALE: 3:2	WT (Lbs): 2.31	SHEET 1 OF 2