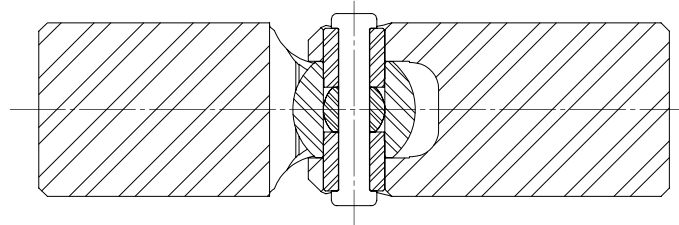
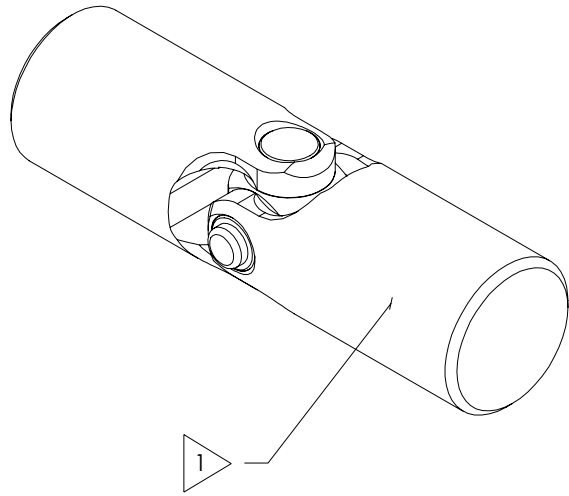


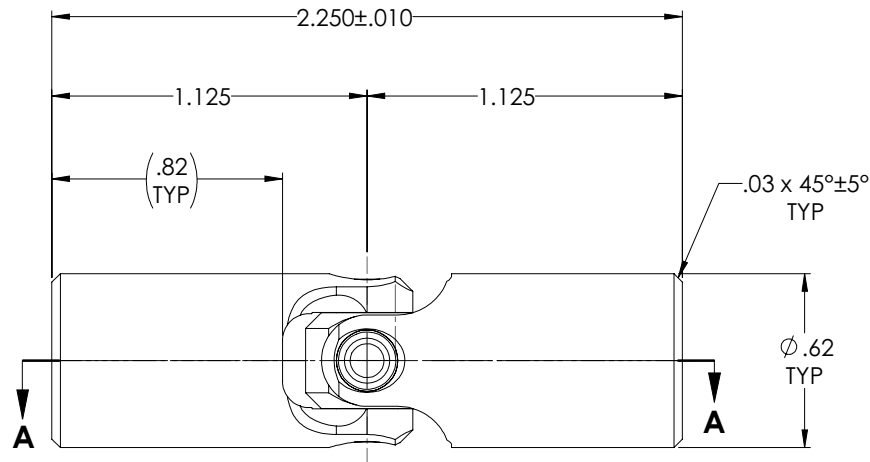
APPROVED

REVISIONS				
ZONE	REV.	DESCRIPTION	DATE	APPROVED

INFORMATION IN THIS DRAWING
PROVIDED FOR REFERENCE ONLY



SECTION A-A



Ø.70
SWING DIA.

NOTE(s), UNLESS OTHERWISE SPECIFIED.

1 MARK ASSEMBLY w/ "BELDEN" LOGO, PART NUMBER, REVISION LEVEL (IF ANY), DATE OF MANUFACTURE, & BELDEN JOB No.

(2) LUBRICATE U-JOINT w/ LUBRIPLATE # 1200-2, NLGI GRADE 2, AW/EP, LITHIUM GREASE OR EQUIVALENT.

DO NOT SCALE DRAWING

<p>UNLESS OTHERWISE SPECIFIED CHAMFER ALL HOLES BREAK ALL SHARP CORNERS DE-BURR ALL FEATURES</p> <p>TURNED SURFACES: $\sqrt{63}$ MILLED SURFACES: $\sqrt{125}$</p> <p>PROPRIETARY AND CONFIDENTIAL THE INFORMATION CONTAINED IN THIS DRAWING IS THE SOLE PROPERTY OF BELDEN UNIVERSAL. ANY REPRODUCTION IN PART OR AS A WHOLE WITHOUT THE WRITTEN PERMISSION OF BELDEN UNIVERSAL IS PROHIBITED.</p>	<p>STANDARD TOLERANCES, UNLESS OTHERWISE SPECIFIED</p> <p>DIMENSIONS ARE IN INCHES [mm]</p> <p>ANGULAR MACHINED: $\pm 1.0^\circ$ FRACTIONAL: $\pm 0.015"$ TWO PLACE DECIMAL: $\pm 0.010"$ THREE PLACE DECIMAL: $\pm 0.005"$ FOUR PLACE DECIMAL: $\pm 0.0005"$ CONCENTRICITY: $.0025" \text{ T.I.R.}$</p> <p>ALL HOLES TO BE LOCATED ON CENTERLINE (EQ.) WITHIN $.005" \text{ T.I.R.}$ INTERPRET GEOMETRIC TOLERANCES I.A.W. ASME Y14.5</p>	<p>MATERIAL: ALLOY STEEL</p> <p>HEAT TREAT: SEE DETAIL DRAWINGS</p> <p>FINISH: NONE</p>	<p>DRAWN: RNK 19MAY04</p> <p>CHECKED: RNK 19MAY04</p> <p>ENG APPR: RNK 19MAY04</p> <p>MFG APPR: []</p> <p>QC APPR: []</p> <p>COMMENTS:</p>	<p>INITIALS: []</p> <p>DATE: 19MAY04</p>	<p>Belden Universal www.beldenuniversal.com</p> <p>TITLE: ASSEMBLY, UNIVERSAL JOINT, "HIGH STRENGTH"</p> <p>SIZE: A DWG. NO: UJ-HS625 REV: A</p> <p>SCALE: 3:1 [WT (Lbs): 0.170] SHEET 1 OF 2</p>
			<p>DATE: 19MAY04</p>		
			<p>DATE: 19MAY04</p>		
			<p>DATE: 19MAY04</p>		