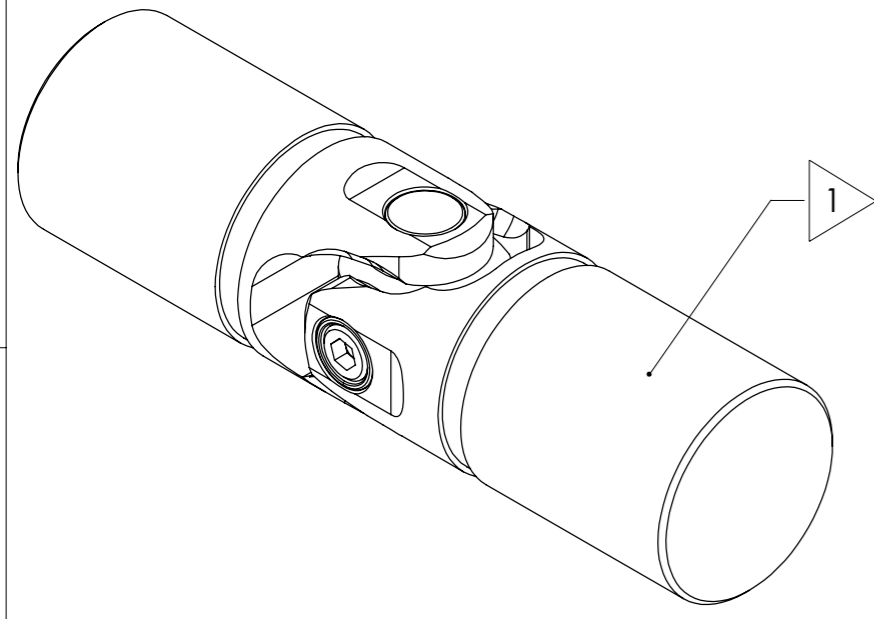


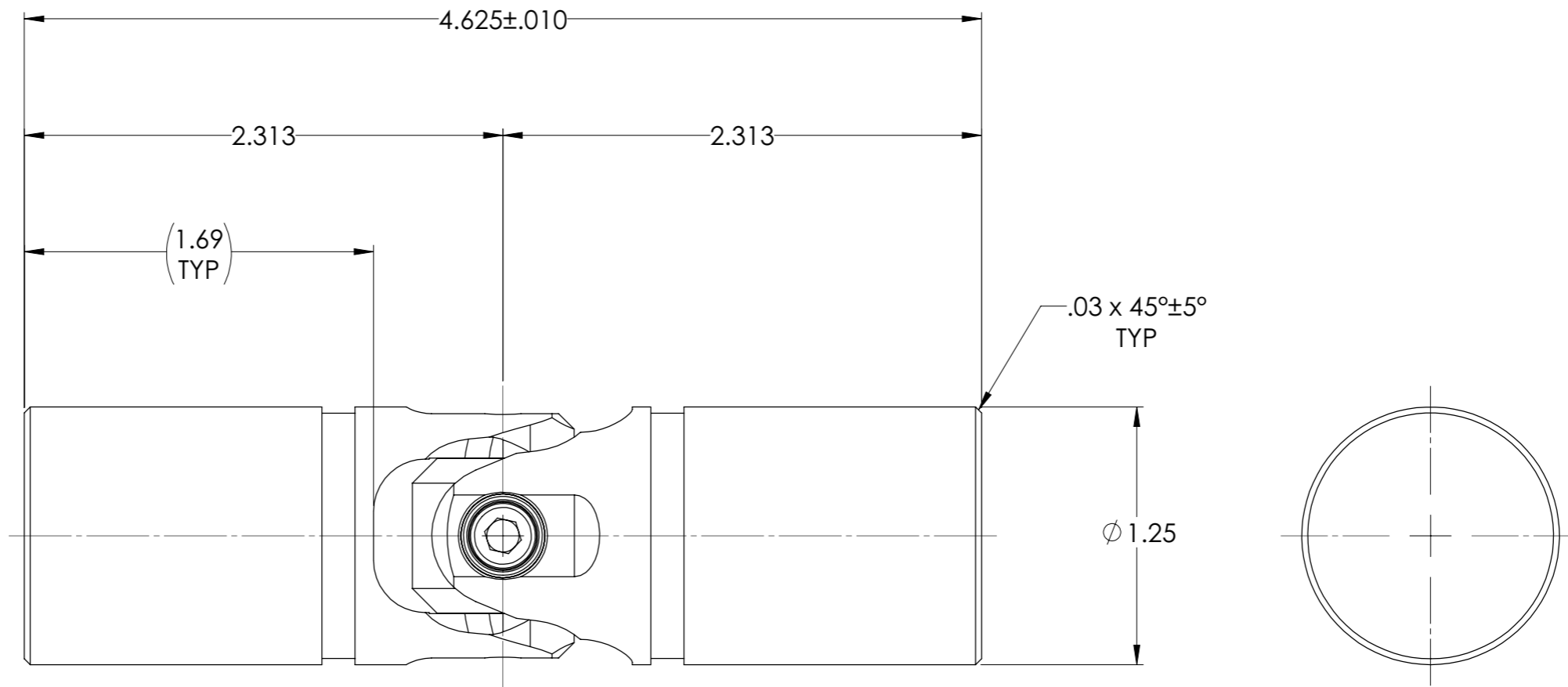
APPROVED

REVISIONS				
ZONE	REV.	DESCRIPTION	DATE	APPROVED

**INFORMATION IN THIS DRAWING
PROVIDED FOR REFERENCE ONLY**



SCALE 1.5 : 1



NOTE(s), UNLESS OTHERWISE SPECIFIED.

1 MARK ASSEMBLY w/ "BELDEN" LOGO, PART NUMBER, REVISION LEVEL (IF ANY), DATE OF MANUFACTURE, & BELDEN JOB No.

(2) LUBRICATE WITH LUBRIPLATE® PRODUCT No. 3000 NLGI GRADE 2, AW/EP, MOLY-LITHIUM GREASE.

(3) REF., MAXIMUM OPERATING ANGLE: 25°.

(4) FULLY SEAT #10-32 SOCKET HEAD CAP SCREW & TORQUE TO 80-90 IN-LBS (6.7-7.5 FT-LBS).

DO NOT SCALE DRAWING

UNLESS OTHERWISE SPECIFIED CHAMFER ALL HOLES BREAK ALL SHARP CORNERS DE-BURR ALL FEATURES TURNED SURFACES: $\sqrt{63}$ MILLED SURFACES: $\sqrt{125}$ PROPRIETARY AND CONFIDENTIAL THE INFORMATION CONTAINED IN THIS DRAWING IS THE SOLE PROPERTY OF BELDEN UNIVERSAL. ANY REPRODUCTION IN PART OR AS A WHOLE WITHOUT THE WRITTEN PERMISSION OF BELDEN UNIVERSAL IS PROHIBITED.	STANDARD TOLERANCES, UNLESS OTHERWISE SPECIFIED DIMENSIONS ARE IN INCHES [mm] ANGULAR MACHINED: $\pm 1.0^\circ$ FRACTIONAL: $\pm .015"$ TWO PLACE DECIMAL: $\pm .010"$ THREE PLACE DECIMAL: $\pm .005"$ FOUR PLACE DECIMAL: $\pm .0005"$ CONCENTRICITY: $.0025"$ T.I.R. ALL HOLES TO BE LOCATED ON CENTERLINE (☺) WITHIN $.005"$ T.I.R. INTERPRET GEOMETRIC TOLERANCES I.A.W. ASME Y14.5	MATERIAL ALLOY STEEL HEAT TREAT SEE DETAIL DRAWINGS FINISH NONE	DRAWN	INITIALS	DATE	Belden Universal www.beldenuniversal.com TITLE: ASSEMBLY, UNIVERSAL JOINT SIZE A DWG. NO. UJ-LV1250 REV A SCALE: 2:1 WT (Lbs): 0.278 SHEET 1 OF 2
			CHECKED	RNK	14JAN05	
			ENG APPR.	RNK	14JAN05	
			MFG APPR.			
COMMENTS:						