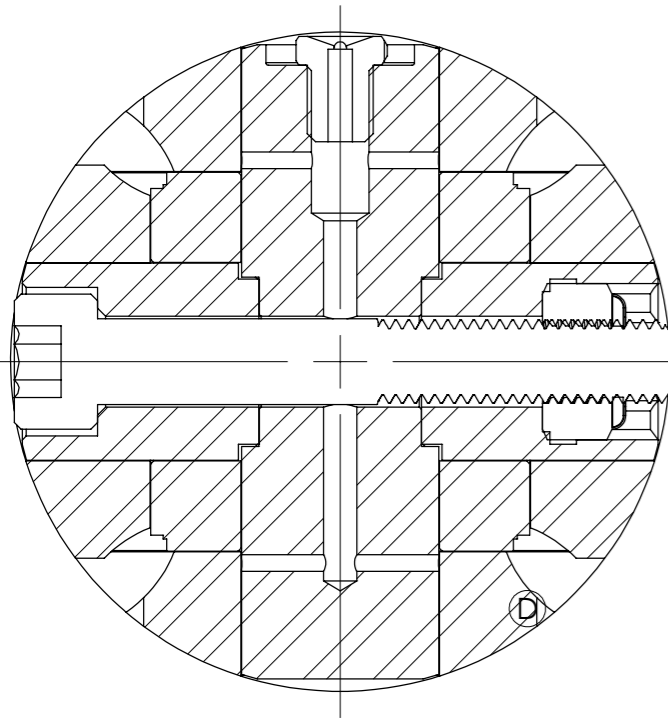


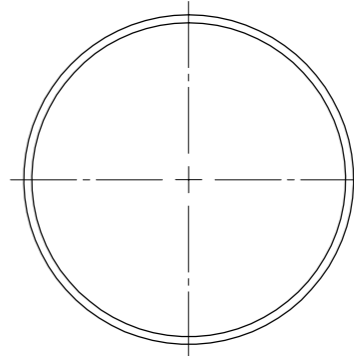
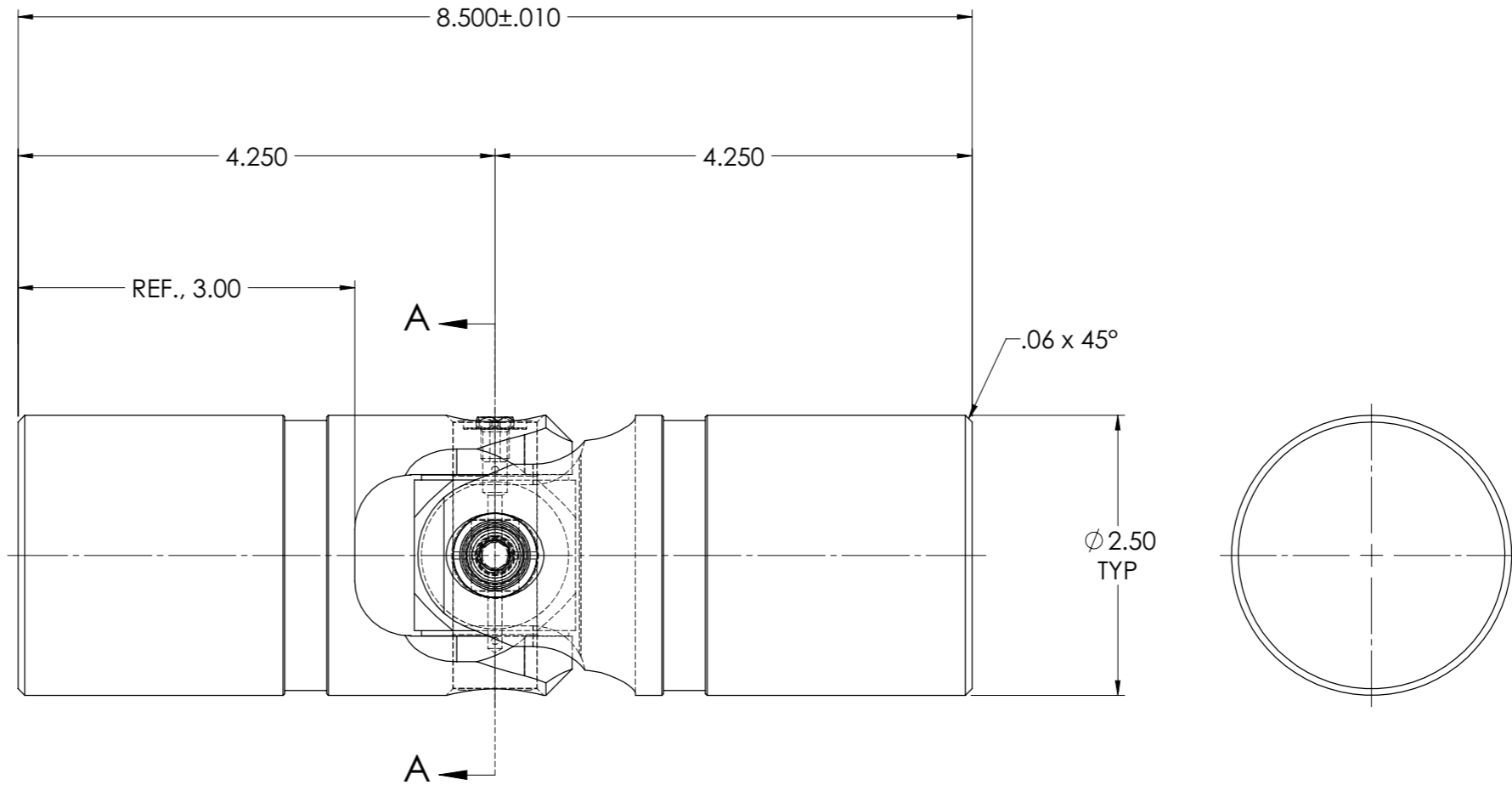
APPROVED

REVISIONS				
ZONE	REV.	DESCRIPTION	DATE	APPROVED

INFORMATION IN THIS DRAWING
PROVIDED FOR REFERENCE ONLY



SECTION A-A
SCALE 2 : 1



DO NOT SCALE DRAWING

NOTE(s), UNLESS OTHERWISE SPECIFIED.

- (H) (1) MARK ASSEMBLY w/ "BELDEN" LOGO, PART NUMBER, REVISION LEVEL (IF ANY), DATE OF MANUFACTURE, & BELDEN JOB No.
- (F)(G)(H) (2) TORQUE M8x1.25 SOCKET HEAD CAP SCREW TO 20 FT-LBS.
- (3) LUBRICATE WITH LUBRIPLATE® PRODUCT No. 3000 NLGI GRADE 2, AW/EP, MOLY-LITHIUM GREASE.
- (4) MAXIMUM OPERATING ANGLE: 25°.

UNLESS OTHERWISE SPECIFIED CHAMFER ALL HOLES BREAK ALL SHARP CORNERS DE-BURR ALL FEATURES TURNED SURFACES: MILLED SURFACES: PROPRIETARY AND CONFIDENTIAL THE INFORMATION CONTAINED IN THIS DRAWING IS THE SOLE PROPERTY OF BELDEN INCORPORATED. ANY REPRODUCTION IN PART OR AS A WHOLE WITHOUT THE WRITTEN PERMISSION OF BELDEN INCORPORATED IS PROHIBITED.	STANDARD TOLERANCES, UNLESS OTHERWISE SPECIFIED DIMENSIONS ARE IN INCHES [mm] ANGULAR MACHINED: ±1.0° FRACTIONAL: ±.015" TWO PLACE DECIMAL: ±.010" THREE PLACE DECIMAL: ±.005" FOUR PLACE DECIMAL: ±.0005" CONCENTRICITY: .0025" T.I.R. ALL HOLES TO BE LOCATED ON CENTERLINE (☉) WITHIN .005" T.I.R. INTERPRET GEOMETRIC TOLERANCES I.A.W. ASME Y14.5	MATERIAL ALLOY STEEL HEAT TREAT SEE DETAILS FINISH NONE	INITIALS DRAWN: RNK CHECKED: RNK ENG APPR.: RNK MFG APPR.: QUALITY APPR.: COMMENTS:	DATE 28JAN99 28JAN99 28JAN99	BELDEN UNIVERSAL www.beldenuniversal.com TITLE: ASSEMBLY, UNIVERSAL JOINT
	SIZE C DWG. NO. UJ-LV2500 REV K			SCALE: 1:1 WT (Lbs): 10.28 SHEET 1 OF 2	