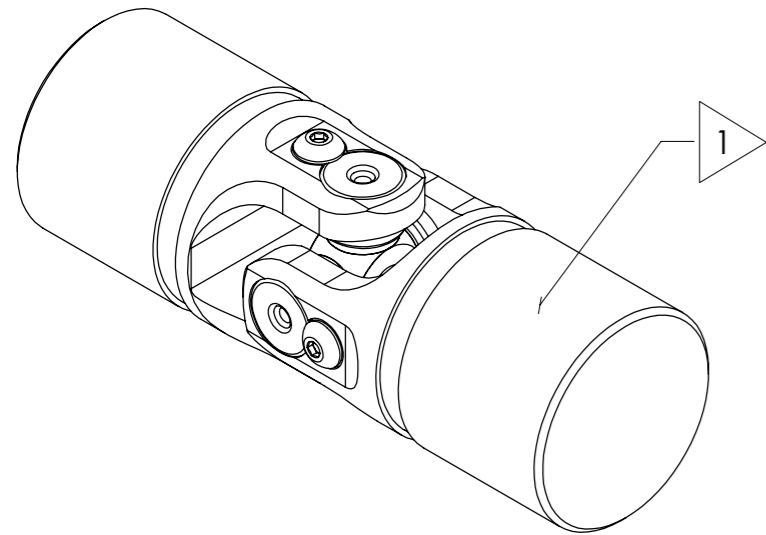


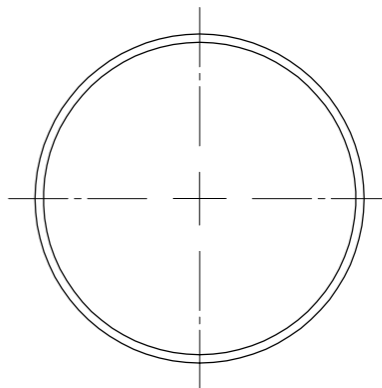
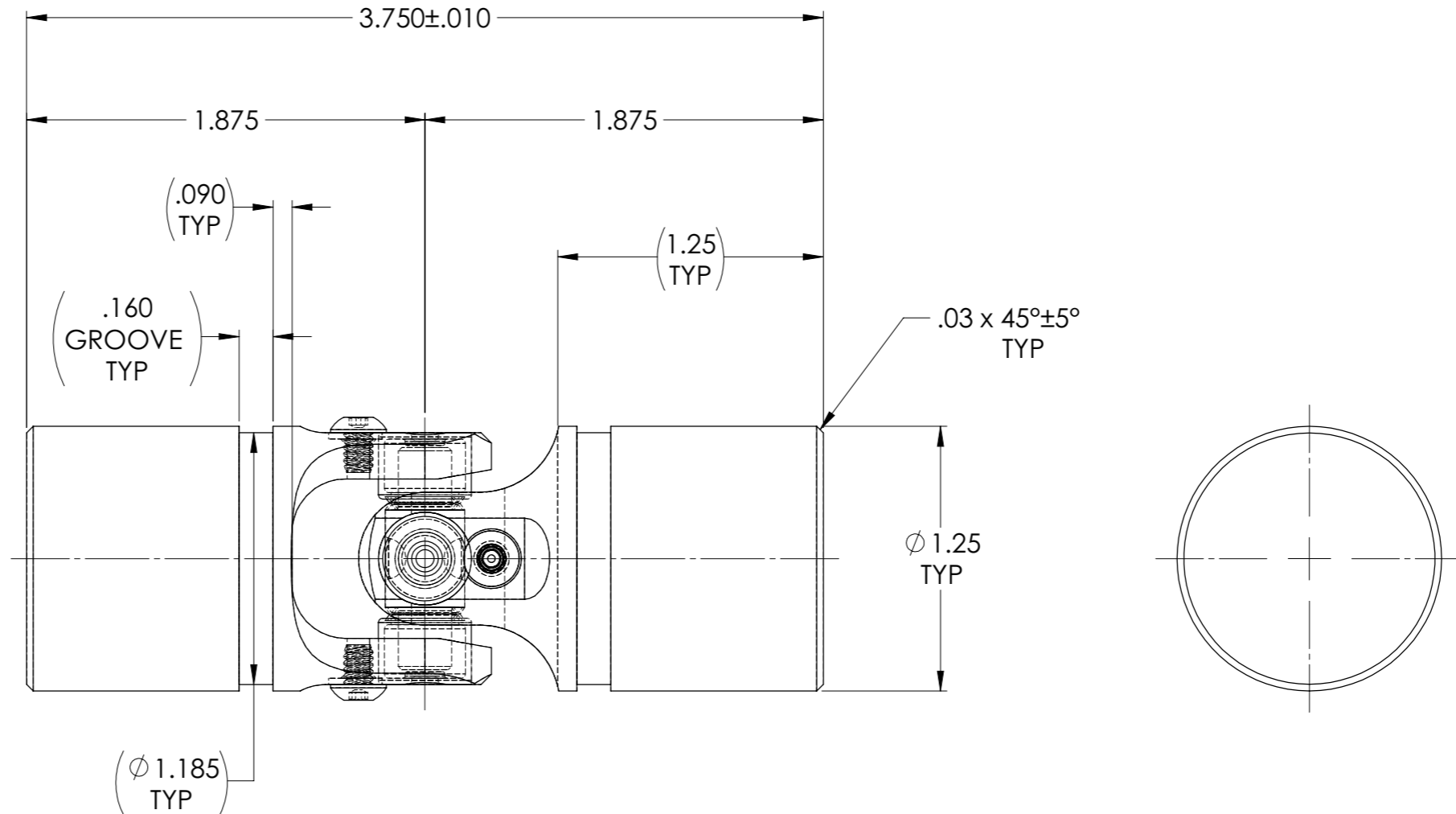
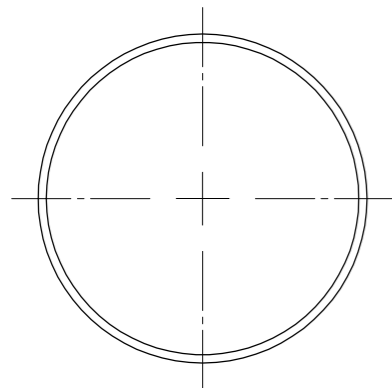
# APPROVED

REVISIONS				
ZONE	REV.	DESCRIPTION	DATE	APPROVED

INFORMATION IN THIS DRAWING  
PROVIDED FOR REFERENCE ONLY



SCALE 1.5 : 1



NOTE(s), UNLESS OTHERWISE SPECIFIED.

1 MARK ASSEMBLY w/ "BELDEN" LOGO, PART NUMBER, REVISION LEVEL (IF ANY), DATE OF MANUFACTURE, & BELDEN JOB No.

(2) PACK NEEDLE BEARINGS w/ TRIBOLUBE 12, NLGI GRADE 2, MULTI-PURPOSE SYNTHETIC GREASE.

(3) REF., MATERIAL: YOKES...ALLOY STEEL,  
CROSS & BEARINGS...ALLOY STEEL,  
B.H.C.S...18-8 STAINLESS STEEL,  
O-RINGS...BUNA-N.

(4) REF., MAXIMUM OPERATING ANGLE: 45°.

DO NOT SCALE DRAWING

UNLESS OTHERWISE SPECIFIED CHAMFER ALL HOLES BREAK ALL SHARP CORNERS DE-BURR ALL FEATURES TURNED SURFACES: $\checkmark_{63/125}$ MILLED SURFACES: $\checkmark_{125}$ <b>PROPRIETARY AND CONFIDENTIAL</b> THE INFORMATION CONTAINED IN THIS DRAWING IS THE SOLE PROPERTY OF BELDEN UNIVERSAL. ANY REPRODUCTION IN PART OR AS A WHOLE WITHOUT THE WRITTEN PERMISSION OF BELDEN UNIVERSAL IS PROHIBITED.	STANDARD TOLERANCES, UNLESS OTHERWISE SPECIFIED DIMENSIONS ARE IN INCHES [mm] ANGULAR MACHINED: $\pm 1.0^\circ$ FRACTIONAL: $\pm .015"$ TWO PLACE DECIMAL: $\pm .010"$ THREE PLACE DECIMAL: $\pm .005"$ FOUR PLACE DECIMAL: $\pm .0005"$ CONCENTRICITY: $.0025"$ T.I.R. ALL HOLES TO BE LOCATED ON CENTERLINE (☉) WITHIN $.005"$ T.I.R. INTERPRET GEOMETRIC TOLERANCES I.A.W. ASME Y14.5	MATERIAL REF., ALLOY STEEL HEAT TREAT N/A FINISH NONE	DRAWN RNK 24MAR10 CHECKED RNK 24MAR10 ENG APPR. RNK 24MAR10 MFG APPR. QC APPR.	INITIALS RNK RNK RNK	DATE 24MAR10 24MAR10 24MAR10	Belden Incorporated <a href="http://www.beldenuniversal.com">www.beldenuniversal.com</a> TITLE: <b>ASSEMBLY, NEEDLE BEARING, UNIVERSAL JOINT</b> SIZE <b>A</b> DWG. NO. <b>UJ-NB1250x00</b> REV <b>A</b> SCALE: 2:1 WT (Lbs): 1.014 SHEET 1 OF 2
			COMMENTS:			