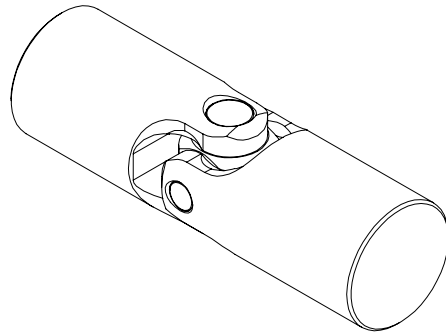


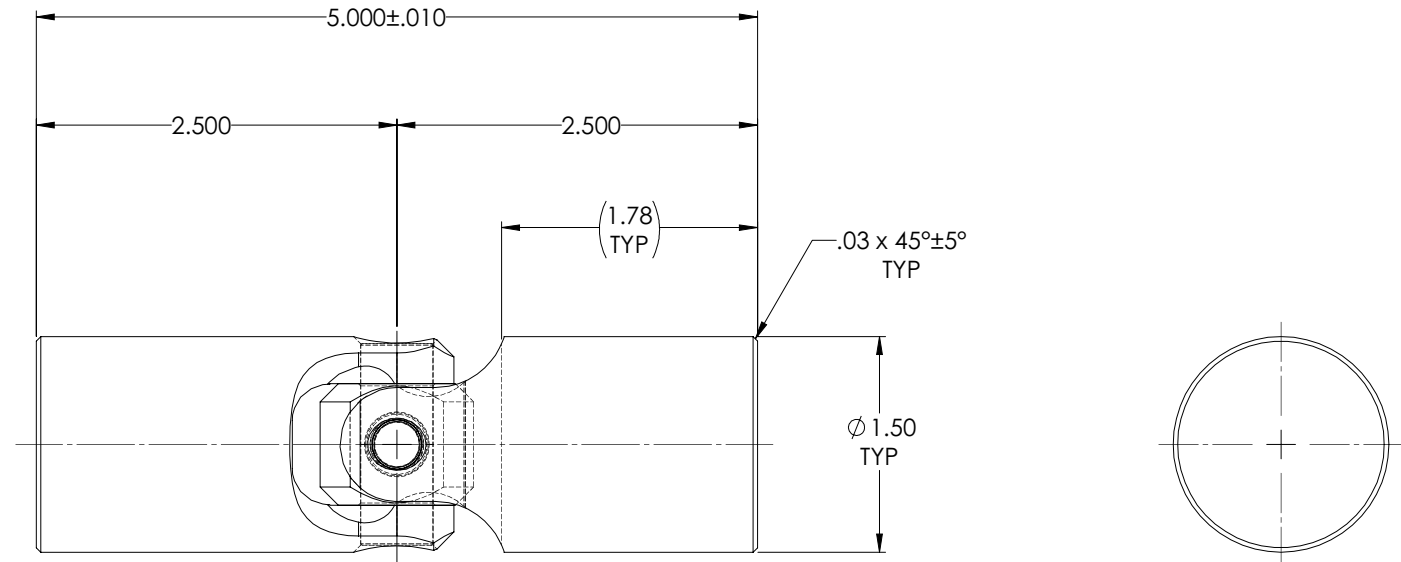
# APPROVED

REVISIONS				
ZONE	REV.	DESCRIPTION	DATE	APPROVED

INFORMATION IN THIS DRAWING  
PROVIDED FOR REFERENCE ONLY



**SCALE 1 : 1**



NOTE(s), UNLESS OTHERWISE SPECIFIED.

(1) MARK ASSEMBLY w/ "BELDEN" LOGO, PART NUMBER, REVISION LEVEL (IF ANY), DATE OF MANUFACTURE & BELDEN JOB No.

DO NOT SCALE DRAWING

UNLESS OTHERWISE SPECIFIED CHAMFER ALL HOLES BREAK ALL SHARP CORNERS DE-BURR ALL FEATURES  TURNED SURFACES: $\sqrt{63}$ MILLED SURFACES: $\sqrt{125}$  <b>PROPRIETARY AND CONFIDENTIAL</b> THE INFORMATION CONTAINED IN THIS DRAWING IS THE SOLE PROPERTY OF BELDEN UNIVERSAL. ANY REPRODUCTION IN PART OR AS A WHOLE WITHOUT THE WRITTEN PERMISSION OF BELDEN UNIVERSAL IS PROHIBITED.	STANDARD TOLERANCES, UNLESS OTHERWISE SPECIFIED  DIMENSIONS ARE IN INCHES [mm]	MATERIAL TYPE 316/316L STAINLESS STEEL	INITIALS    DATE DRAWN    RNK    17FEB06	<b>Belden Incorporated</b> <a href="http://www.beldenuniversal.com">www.beldenuniversal.com</a>  <b>TITLE:</b> <b>ASSEMBLY, UNIVERSAL JOINT, STAINLESS STEEL</b>  SIZE    DWG. NO.    REV <b>A</b> UJ-SS1500-316 <b>A</b> SCALE: 3:2    WT (Lbs): 2.275    SHEET 1 OF 2
	ANGULAR MACHINED: ±1.0° FRACTIONAL: ±.015° TWO PLACE DECIMAL: ±.010° THREE PLACE DECIMAL: ±.005° FOUR PLACE DECIMAL: ±.0005° CONCENTRICITY: .0005" T.I.R.	HEAT TREAT NONE	CHECKED    RNK    17FEB06 ENG APPR.    RNK MFG APPR. QC APPR.	
	ALL HOLES TO BE LOCATED ON CENTERLINE (L) WITHIN .005" T.I.R. INTERPRET GEOMETRIC TOLERANCES I.A.W. ASME Y14.5	FINISH NONE	COMMENTS:	